

PERSONAL TRANSPORTATION VEHICLES



THE EASY CHOICE™ WHEN LUXURY, PERFORMANCE AND VALUE MATTER

Whether you're reeling in a big catch or scooting over to the park, the new Drive² line of Personal Transportation Vehicles provides superior precision engineering and technological innovations. Whatever challenges your day may hold, you'll have plenty of strength to tackle them.



1985

G-2 MODEL GOLF CAR
The first golf car to feature a 4-stroke, overhead valve engine and an injection-molded, plastic front and rear body.

1996

G-19 MODEL (ULTIMA) GOLF CAR
Our first 48-volt electric golf car featured innovative roll-away safety protection and regenerative braking.

2006

THE DRIVE® (PERSONAL TRANSPORTATION VEHICLE) The DRIVE was introduced to the world with striking new features designed to radically change people's perception of the golf car.

2016

DRIVE² GOLF CAR
The Drive² lineup brought forward all the best features from The Drive but also introduced QuietTech EFI® – a gas car that's almost as quiet as an electric. Additionally, QuietTech EFI included the first Independent Rear Suspension ever to be found on a golf car.

2018

UMAX® AND UMAX RALLY™
The UMAX lineup combined the best features of Yamaha's motorsport legacy to create a game-changing utility vehicle line. Building on that line, the UMAX Rally was added to the family, providing a lifted, pre-accessorized version of the already successful UMAX.

2019

UMAX RALLY²+™
Expanding on the innovative UMAX launch, the UMAX Rally²+ was added to the lineup featuring lifted suspension, 23" all-terrain tires, Yamaha Genuine wide fender flares and front brush guard, and a convertible rear-facing seat for more loved ones or more cargo.

2020

MATTE PTV COLORS
Being the envy of the neighborhood means driving one of the three new matte color options: Atomic Flame, Mica and Graphite, reiterating Yamaha's signature quality and innovative edge.

A HISTORY of MOVING DREAMS FORWARD

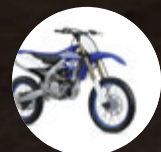
RELIABILITY

60+ YEARS

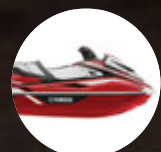
of experience building everything from golf cars to snowmobiles, making Yamaha one of the most recognized and respected brands in the world.

With Yamaha, every challenge is an opportunity for adventure. Snowmobiles, generators, scooters, ATVs, personal watercraft vehicles and more.

With such a long history of success in a variety of industries, you can trust Yamaha to continue innovating with new technology that creates unforgettable moments in the lives of our customers.



MOTORCYCLES



WAVERUNNERS®



ALL-TERRAIN VEHICLES



SNOWMOBILES



BOATS



MARINE ENGINES



GENERATORS



RECREATIONAL VEHICLES



Shown with optional Yamaha Genuine Accessories.

The best car IS STILL BETTER

A gorgeous weekend is forecasted, and there's no question that camping, fishing, or simply exploring with the ones that make you smile will be on the agenda.

With the Drive², you're riding in over 60 years of precise engineering and technological innovations blended together into the most luxurious Personal Transportation Vehicle (PTV) in the industry. Don't settle. Get the best for you and yours.

DRIVE²



All the features
**A MODERN DRIVER
 COULD WANT**

DRIVE²

At Yamaha, we're innovating with the modern golfer in mind, and we've created something completely new—the Drive². With bold colors and modern body styling, it looks better than ever, but the biggest change is the one you don't see—a smoother ride.



TWO USB CONNECTIONS

To help drivers and passengers stay charged, right from the dash.



FRONT SUSPENSION

Fully independent front suspension for maximum comfort.

AVAILABLE COLORS

NEW	Atomic Flame	Matte
NEW	Graphite	Matte
NEW	Mica	Matte
	Moonstone	Metallic
	Onyx	Metallic
	Aqua Blue	Metallic
	Jasper	Metallic
	Bluestone	Metallic
	Glacier	In-mold



STORAGE BIN WITH NO-SLIP MAT

34% larger to keep more valuables in place.



DRIVE² SUN TOP

Our factory ClimaGuard™ Sun top offers protection from the elements, has a dual gutter system and is 33% larger than the nearest competitor.



NEWLY REDESIGNED PADDED STEERING WHEEL

Designed for more comfort and better handling.

AUTOMOTIVE-STYLE DASH

Comes fully equipped with dual-sized cup holders, room for more items like snacks and mobile devices, and two USB ports.



OR



REAR FOLD-DOWN SEAT

When you need to carry cargo instead of people, the rear-facing seat flips down to create a 200lb capacity storage space. Available in tan or black.

MORE VERSATILITY *and* VALUE *for the* MODERN DRIVER

Don't let that comfortable seating and sporty design fool you. The Adventurer Sport 2+2 may play nice, but when it's time to take on a tough job, it's ready to work hard. Easily go from cruising around the block with friends to maintaining the community garden or hauling gear for a family camping trip with 300 lbs. of payload capacity, large 20" tires and a lifted suspension.



A
TRUE
—
JACK-OF-ALL
TRADES

Yamaha Genuine front brush guard has a black powder-coated finish with 1¼" diameter tubing to fit a variety of mounts for additional lighting accessories.

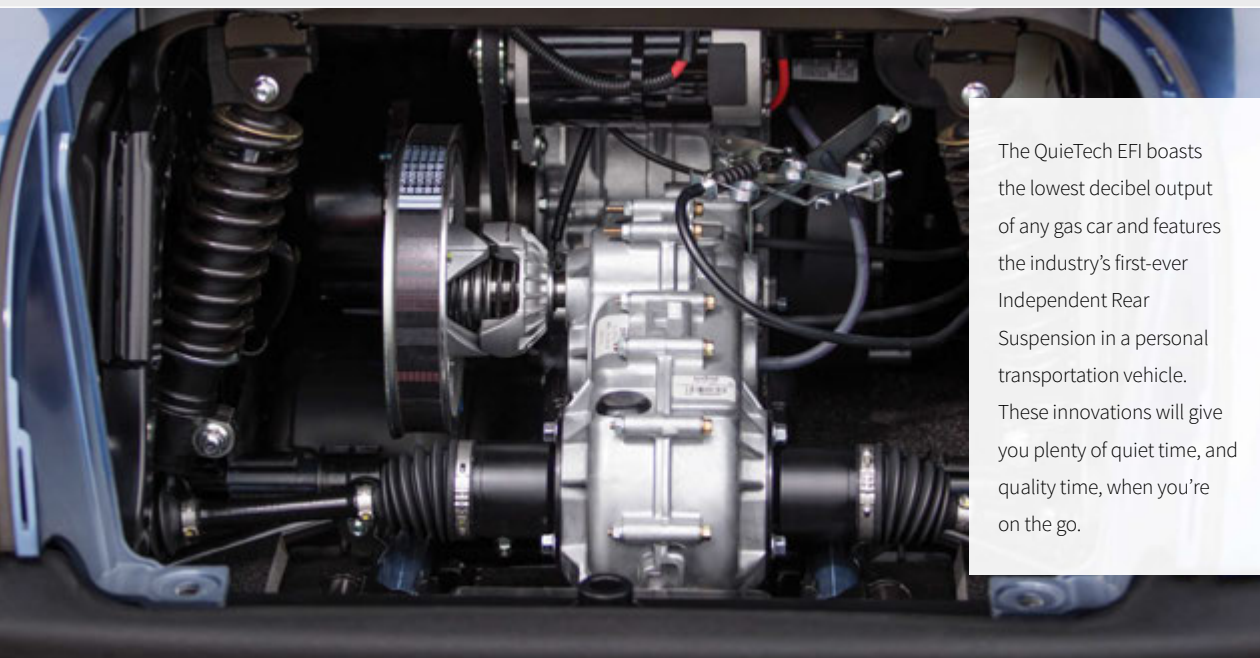


WITH 20" TIRES, FLIP-DOWN SEATS, AND 3" LIFT KIT,
IT'S A LOW-MAINTENANCE, RELIABLE COMPANION.

A gas car that is
**ALMOST AS QUIET
AS AN ELECTRIC**



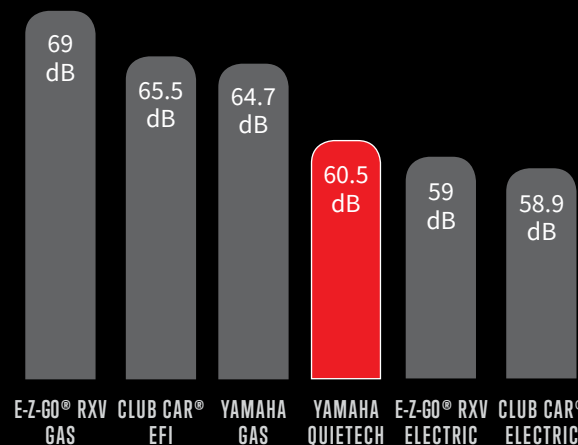
Our Personal Transportation Vehicles take the effort out of errands. The Drive² handles like a dream and makes even short trips fun! We developed our QuieTech EFI technology to create a quieter, more fuel-efficient ride, so you can spend less money on fuel and more on doing the things you love.



The QuieTech EFI boasts the lowest decibel output of any gas car and features the industry's first-ever Independent Rear Suspension in a personal transportation vehicle. These innovations will give you plenty of quiet time, and quality time, when you're on the go.

QUIETECH EFI. EVERYTHING ELSE IS JUST NOISE.

NOISE LEVEL ⁽¹⁾



QUIETECH EFI
60.5dB⁽¹⁾

DOG BARKING
95dB⁽⁵⁾

LEAF BLOWER
100dB⁽⁴⁾

FROG CROAKING
108dB⁽³⁾

A LOUD "DINNER TIME!"
120dB⁽²⁾

261 MILES

AVERAGE RANGE BETWEEN FILL-UPS

45 MPG*

UP TO 23%

BETTER FUEL ECONOMY THAN OUR COMPETITORS

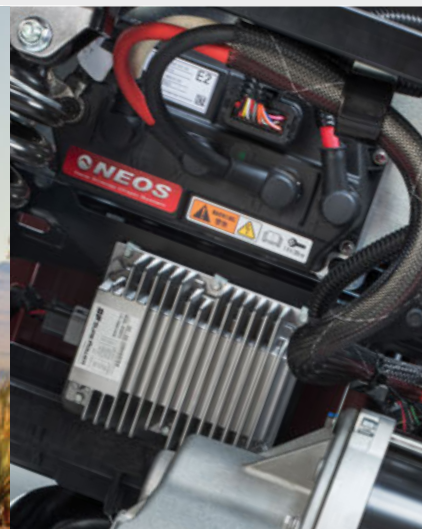
*Independent laboratory testing in a fleet environment by Transportation Research Center, Inc. 2015, on model year 2016 cars.

⁽¹⁾Decibel reading from 25 feet at constant speed on a paved cart path for 2016 fleet models.

It's ALL ABOUT the JOURNEY



Whether you want a Personal Transportation Vehicle for riding around the neighborhood with friends and family, or you want to climb hills without breaking a sweat, the silky smooth acceleration of the PowerTech AC PTV will allow you to enjoy the journey as much as the destination.

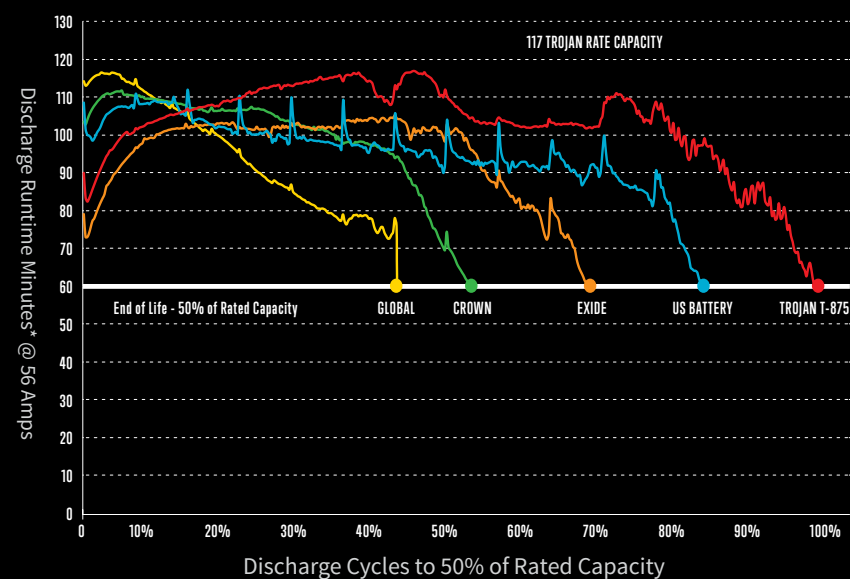


Toyota Industries-built motor control unit.



Independent Laboratory Testing 8-Volt Batteries

Yamaha is the only golf car manufacturer that uses industry-best Trojan T-875 batteries as standard equipment.



OUR ONLY QUESTION FOR YOU IS REFILL OR RECHARGE?

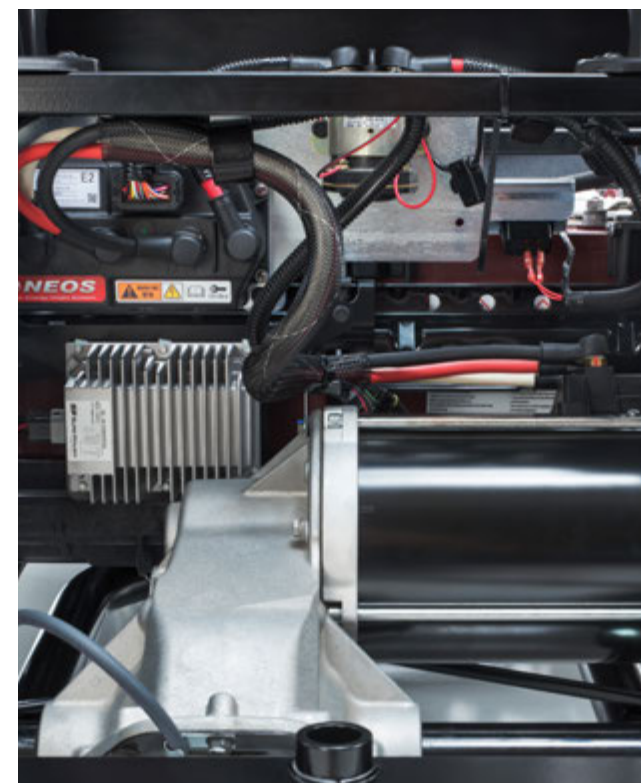
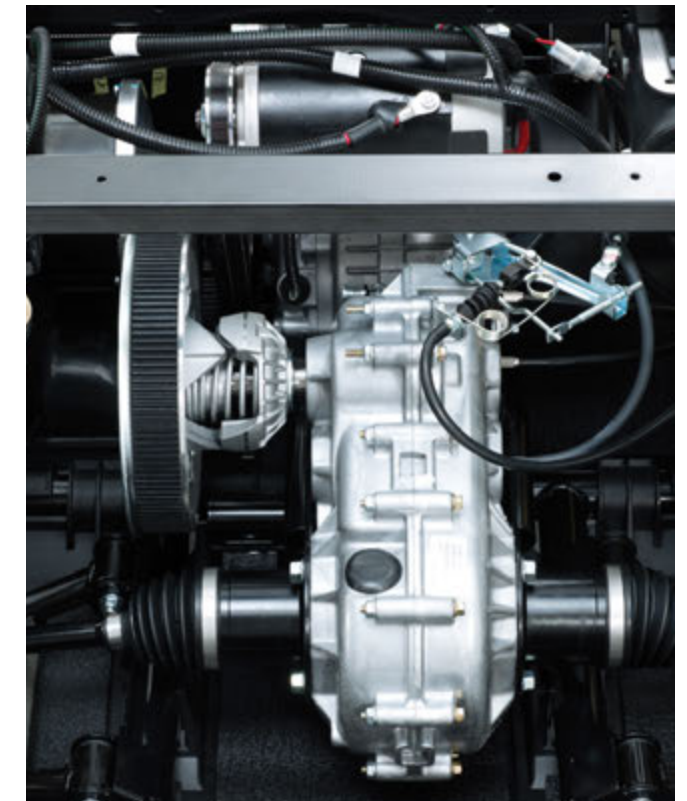
With our quiet gas cars boasting a 261-mile range and our electric cars wielding an industry-leading 6.7 horsepower motor, making a decision between the two simply comes down to preference. Either way, the choice is yours.



QuietTech EFI, now equipped with optional Independent Rear Suspension is the quietest, most comfortable on the road. And if you're worried about emissions, don't be! Yamaha's EFI gas cars feature the lowest fuel emissions around, and with over 60 years of gas motor manufacturing experience under our belts, you can trust the dependability and performance known to Yamaha owners around the world.

- Yamaha-exclusive QuietTech technology
- Independent Rear Suspension (IRS)
- 12.8% more miles to the gallon over the competition—45 MPG*
- Yamaha-built engine
- Industry-leading fuel economy
- Fewest emissions and up to 76% fewer pollutants than competitors*

OR



PowerTech AC cars prioritize energy efficiency while offering all the power you need—rapid acceleration, smooth uphill climb, and exceptional battery strength and endurance. You can't go wrong with PowerTech AC because our battery power is synonymous with horsepower, and efficiency is our middle name.

- PowerTech AC Drive
- Toyota Industries-built motor controller unit
- Reliability and proven performance
- Cradle-smooth suspension system
- Industry-leading T-875 Trojan batteries come standard
- Best hill-climbing ability
- Delta-Q charger

All the
POWER of **YAMAHA**
ENGINEERED into a car

UMAX™ | the All New
RALLY™

The new UMAX Rally™ features a lifted suspension, 23" tires wrapped around 12" V-window wheels, and comes complete with a Yamaha Genuine front brush guard and fender flares. Whether it's for a day at the beach or a day of errands, the UMAX Rally goes where no other Light Utility Vehicle can, making it yet another reason why Yamaha is The Easy Choice™.



UNDER-HOOD STORAGE COMPARTMENT

House all of your necessities in a sizable storage area, designed for convenience and effortless accessibility.



EASY & EFFORTLESS DUMP BED

Swiftly open and close the tailgate and unlock the dump bed with one hand.



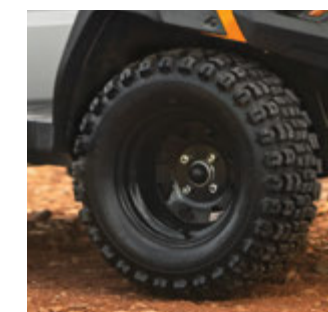
ULTIMATE PROTECTION

Equipped with a Yamaha Genuine Brush Guard, objects both large and small don't stand in the way.



SIZABLE CARGO BED

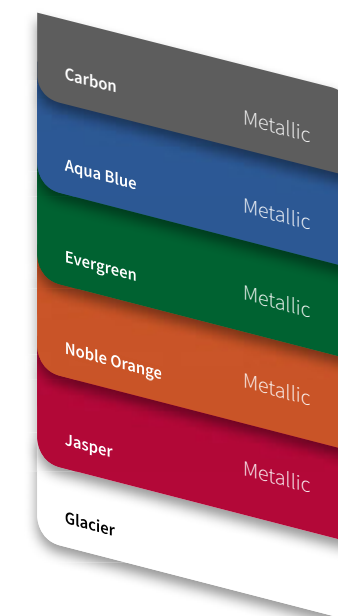
Get the cargo space you need to get any errand done with the UMAX One Rally (10.4 cu. ft.) or the UMAX Two Rally (12.9 cu. ft.).



GRITTY TIRES

Large 23" all-terrain tires that are ready for any environment.

MODERN COLORS



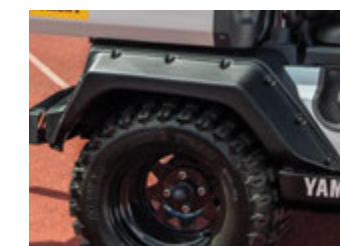
INCREASED GROUND CLEARANCE

No need to worry about getting stuck with 6" of clearance.



CONVENIENT SIDE-FILL GAS TANK

Makes for a quick, efficient fill-up.



ELEMENT TOUGH

Keep dry through the harshest terrain with Yamaha Genuine fender flares.



AUTOMOTIVE-STYLE DASH

Completely redesigned for the modern driver.

Fit everything for the job.
RALLY EVERYONE for a
COMFORTABLE RIDE



The Saturday itinerary is set: some yard work in the morning, your favorite pizza spot for lunch with friends from out-of-town, and then some hardware store errands before calling it a day. With comfortable convertible seating, plenty of storage, and an edgy design that matches your style, the UMAX Rally²⁺² not only fits your job, but it also fits your life.



FITS YOUR JOB

Effortlessly accomplish any job with 250 lbs. of cargo capacity ready to hold everything from tools to gardening supplies and more.



FITS YOUR LIFE

From your job to your family life, enjoy luxurious bucket seating, under-hood storage, and a spacious basket area between the front and rear seats. Ideal for shopping bags and groceries, the UMAX Rally²⁺² is the ultimate travel companion for anywhere you and yours want to go.



INCREASED GROUND CLEARANCE

No need to worry about getting stuck with 6" of clearance.



ULTIMATE PROTECTION

Equipped with a Yamaha Genuine Brush Guard, nothing stands in its way.



UNDER-HOOD STORAGE COMPARTMENT

Designed for convenience and effortless accessibility.



ELEMENT TOUGH

Keep dry through the harshest terrain with Yamaha Genuine fender flares.

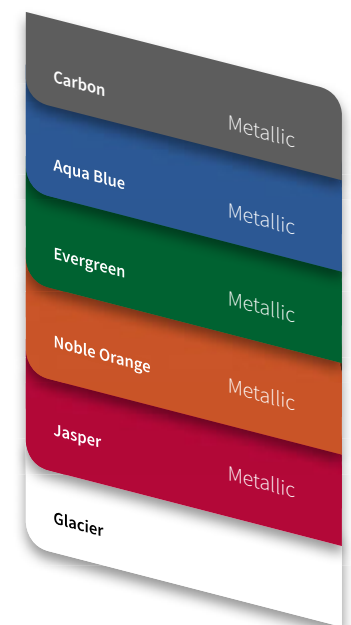


HOLDS IT ALL

Perfect for extra sports equipment, groceries, or valuables.

TACKLE ANY JOB,
 OR CARRY THE ENTIRE FAMILY,
 WITH 23" TIRES, FLIP DOWN REAR FACING SEATS, AND A 2" LIFT KIT.

MODERN COLORS





DON'T EXPECT IT. DEMAND IT!™

When it comes to your new Yamaha golf car, using Yamaha Genuine Parts and Accessories ensures they run the same as day one. In fact, the same team of engineers that designed your Yamaha golf car worked hand-in-hand with Yamaha product planners to guarantee our accessories look right, fit right and perform right.

Advance research and state-of-the-art materials are the keys to making your vehicle look and perform like only a Yamaha can. We continually subject our parts and accessories to stringent testing, specifically designed to evaluate all aspects of functionality, durability and safety, giving you peace of mind from worrying about inferior aftermarket parts ... **Don't Expect It. Demand It!**

All Yamaha Genuine Parts and Accessories have a three-year limited warranty.



Watch for the "Must Have" logo throughout the catalog. This symbol indicates essential, hand-picked accessories that are key to building the ultimate Yamaha Golf Car.



PARTS AND ACCESSORIES ▶

AUDIO



Bluetooth® Audio Controller

Make your sound system just as easy to control in your Yamaha as it is in your family car with our Bluetooth® Audio Controller that allows you to change songs, adjust volume, and pause/play. Pairs perfectly with the MA100 Speaker/Amp Package (GCA-MA100-00-00)—sold separately. Universal fit for most golf cars.

SBT-BTVCO-00-14 | \$99.99

NOTE: Requires audio source.



JVC® XM® Satellite Radio/Bluetooth®/CD Receiver

Enjoy connecting two phones for full-time voice connection, automatic pairing, 11 presets, 13-band graphic equalizer, two-zone variable-color illumination and more. With this outdoor-ready, Bluetooth XM/BT/CD receiver featuring K2 Technology for superior sound, you'll never cruise the same again. Fits all single-DIN openings.

GCA-JVCKD-R9-9M | \$214.99



Overhead AM/FM Bluetooth® Stereo



Instead of playing music through your cellphone speakers, enjoy your favorite tunes through our Overhead AM/FM Bluetooth® Stereo that can withstand the harshest conditions, takes up none of your car space, and gives you impeccable sound quality. Fits 2017- Drive² PTV and all 2019- UMAX Rally models. Requires Sun Top, sold separately.

J0G-H81C0-V0-00 | \$649.99

NOTE: For UMAX Rally 2+2 models, modification required to mounting brackets.



JVC® Bluetooth® Media Receiver

Stream your favorite tunes from Pandora®, iHeart Radio®, or JVC® Smart Music Control with our built-in Bluetooth® connectivity for smartphones and USB connections for iPod®/iPhone® (including Siri® Eyes-Free-Mode) using this optimal outdoor media receiver ideal for golf cars, ATVs, Side-by-Sides, motorcycles, and boats. Fits all single-DIN openings.

GCA-JVCKD-X3-3M | \$209.99



MA100 Speaker/Amp Package

Kick your sound game up a notch by adding this MA100 Speaker/Amp Package to your Drive². Amplify your favorite songs from basic to banging with this salt and corrosion-resistant system that will keep the entertainment going as you cruise. Universal fit for most golf cars.

GCA-MA100-00-00 | \$148.99



Stereo Console with Speakers

Experience perfect sound while perfectly complementing the style of your Drive² with our Stereo Console with Speakers. This overhead console delivers optimal sound without disrupting the space in your dash. Fits 2010 - 2016 The DRIVE/2017 - 2019 Drive² cars with Drive² ClimaGuard™ Sun Top.

GCA-JW191-10-00 | \$290.99

GOLF



Cabana Golf Bag Cover

by Club Pro Products®

Keep the elements out and your performance undisturbed with this convenient protective cover for your clubs, or any other prized possession as you go from event to event. Fits all 2010- The DRIVE PTV and 2017- Drive² PTV models. Four-year limited warranty.

1 Taupe.....GCA-J0A60-00-00 | \$199.99

2 Black.....GCA-J0A60-00-BK | \$199.99



Yamaha Club and Ball Washer

Just because your equipment gets dirty doesn't mean the game stops. Keep on pace by getting must-have accessories like our Golf Club and Ball Washer. Fits all 2010- The DRIVE PTV and 2017- Drive² PTV models.

GCA-JW131-01-00 | \$56.99

NOTE: The Club and Ball Washer, Sand Bottle, Sand Bucket, and Coolers cannot be used in conjunction with The DRIVE Rear Facing Seat.



Yamaha Cooler



Whether enjoying a day of shore fishing, riding through your community, or simply out exploring, our new and improved insulated beverage cooler for The DRIVE and Drive² will be the perfect companion. Re-engineered and rigorously tested to outperform today's coolers. Fits all 2010- The DRIVE PTV and 2017- Drive² PTV models.

GCA-J0B32-00-00 | \$99.99

NOTE: The Club and Ball Washer, Sand Bottle, Sand Bucket, and Coolers cannot be used in conjunction with The DRIVE Rear Facing Seat.



Yamaha Sand Bucket Kits

Easily store sand, small items, and more by getting the newly improved Sand Bucket Kit. Completely redesigned to surpass stringent testing. Fits all 2010- The DRIVE PTV and 2017- Drive² PTV models.

GCA-J0A30-00-00 | \$82.99

NOTE: Will not work side by side with additional Yamaha accessories mounted to sweater basket.

GOLF



Yamaha Sand Bottle Kits

Always have sand on hand with our new sand bottle kits. These reconfigured kits have bottles that include comfortably integrated handholds (making them easy to grip with gloves), have larger square opening allowing for quick filling without removing bottom lid, as well as an even flow of sand to fill divots more effectively. Fits all 2010- The DRIVE PTV and 2017- Drive² PTV models. Three-year limited warranty.

SINGLE SAND BOTTLE KIT

GCA-J0A40-00-00 (with handle) | \$26.99
GCA-J0B40-00-00 (without handle) | \$25.99

DUAL SAND BOTTLE KIT

GCA-J0A41-00-00 (with handle) | \$68.99
GCA-J0B41-00-00 (without handle) | \$64.99

SAND BOTTLE ONLY

GCA-J0A40-21-00 (with handle) | \$16.99
GCA-J0B40-21-00 (without handle) | \$15.49

NOTE: Fits existing filling stations at golf courses currently using Yamaha sand bottles. Sand bottles with or without handle are interchangeable. The Club and Ball Washer, Sand Bottle, Sand Bucket, and Coolers cannot be used in conjunction with The DRIVE Rear Facing Seat.

LIGHTING AND ELECTRICAL



12v Accessory Plug and Receptacle Kit

Never go without power again with this corrosion-resistant, water-resistant, marine-grade constructed 12v Accessory Plug and Receptacle Kit. Fits any vehicle with a 12v DC power source.

COMPLETE KIT

ATV-12VPC-00-KT | \$44.99

12v ACCESSORY PLUG ONLY

DBY-ACC56-00-85 | \$17.99

12v ACCESSORY RECEPTACLE ONLY

ATV-12VPC-00-RC | \$21.99



Waterproof USB Dual Charge Port

Add the luxury of a waterproof USB dual charge port to your golf car, boat, ATV, Side-by-Side, motorcycle, or even automobile. (The USB charge port uses the same mounting hole and connectors as the DC receptacle, making upgrading to USB a snap.) Universal fit for most golf cars, boats, side-by-sides, and other 12-volt applications.

GCA-JW970-00-00 | \$22.99

LIGHTING AND ELECTRICAL



Trail Tech® Multi-Function Meter Kit

Easily gauge the time, your speed, accumulated run-time, distances, and more with our multi-function meter kit that will keep your essential info at-the-ready as you drive.

FITS ALL 2019- UMAX RALLY MODELS.

J0G-H35H0-V0-00 | \$159.99

FITS ALL 2017- DRIVE² PTV AND DRIVE² SPORT 2+2 MODELS

GCA-J0D18-00-00 | \$149.99



HomeLink® Wireless Control System

We teamed with Gentex®, the world's most widely trusted and used vehicle-based wireless remote control system, to bring you this two-button HomeLink® Wireless Control System: the ultimate user-friendly way to connect your Yamaha to your home. Fits most golf cars, ATVs, Side-by-Sides, on-road and off-road motorcycles, marine, auto, commercial and RV models.

GCA-JC017-00-KT | \$149.99



Backlit Yamaha Logo Light

Add this Backlit Yamaha Logo Light anywhere from the front cowl of your DRIVE or Drive² to your Wolverine or Viking® and even your truck or family car. (Plug-and-play installation on Drive² PTV and Fleet models with Yamaha Genuine upgrade light kits.)

FITS ANY VEHICLE WITH A 12V DC POWER SOURCE

GCA-J0B17-00-00 | \$69.99

FITS ALL 2017- DRIVE² MODELS

GCA-J0D17-00-PC | \$94.99



UMAX Yamaha Backlit Logo

Give your UMAX an intimidatingly gritty edge to the appearance of your front grill that'll make a statement wherever you go. Easily connects to factory headlight for plug-and-play wiring. Fits all 2019 UMAX Rally models.

J0G-H4104-V0-00 | \$89.99

NOTE: Trimming of front grill required for installation.

YAMAHA LIGHTS THE WAY

What drives us? Our unwavering dedication to innovate the best for our customers. And at Yamaha, we know nothing will continue to be the best unless it evolves.

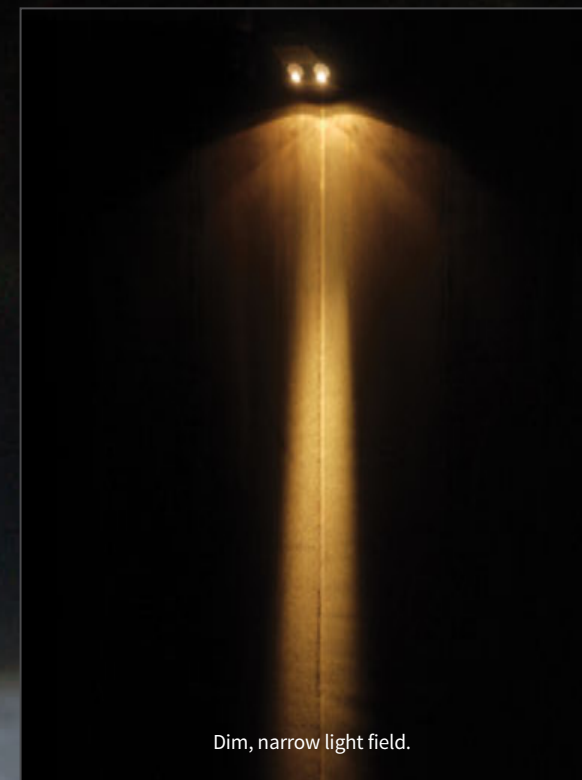
Halogen lights are simply no longer the best, so we've raised our standard. Now, all of our premium personal transportation vehicles come outfitted with LED headlights for a brighter, clearer ride.

Now more powerful than ever before, our lights deliver exceptionally less drain on batteries and produce double-to-triple the amount of visibility compared to our competitors. With Yamaha, you can enjoy your ride confidently, even after the sun sets.

MAXIMUM VISIBILITY

Minimum Energy Used

HALOGEN
OLD INDUSTRY STANDARD



LED
NEW YAMAHA STANDARD



THE DRIVE² LIGHT SYSTEM



LED FRONT LOGO



LED HEADLIGHTS



LED TURN SIGNALS



LED TAILLIGHTS

LIGHTING AND ELECTRICAL



Premium PTV Upgrade Kit



Features a plug-and-play upgradeable premium harness, all new phosphor coated chip-on-board (COB) module that features full-power flashing amber LED front turn signals, the all-new basic amber LED front turn signal chip-on-board (COB) module, 20-diode LED taillight and brake lights, front and rear LED turn signals, 4-way flasher, horn, and side reflex reflectors. Includes Yamaha's exclusive, automotive-style, premium turn signal stalk that incorporates the headlight on/off switch, turn signal handle, and integrated horn button.

FITS 2017- DRIVE² PTV AC MODELS (WITH CODE J0E)
GCA-J0E12-00-PT | \$469.99

FITS 2017- DRIVE² PTV EFI MODELS (WITH CODE J0D)
GCA-J0D12-00-PT | \$479.99



Ultra-Premium PTV Upgrade Kit



Features everything from the Premium Kit, in addition to the all-new waterproof/dustproof premium white LED accent/amber LED front turn signal chip-on-board (COB) module with clear lens assembly*, as well as the all-new 26-LED sequential stop-tail-turn rear lights.

FITS ALL 2017- DRIVE² MODELS
GCA-J0D12-00-UP | \$599.99

	PREMIUM		ULTRA-PREMIUM	
	PTVA	PTVE	PTVA	PTVE
Model Type	PTVA	PTVE	PTVA	PTVE
Model Code	J0D PTV QuieTech EFI	J0E PTV PowerTech AC	J0D PTV QuieTech EFI	J0E PTV PowerTech AC
Upgrade Light Kit Part Number	GCA-J0D12-00-PT	GCA-J0E12-00-PT	GCA-J0D12-00-UP	
Upgrade Light Kit Name	DR2PTV EFI J0D PREMIUM UPG KIT	DR2PTV AC J0E PREMIUM UPG KIT	DR2PTV EFI J0D/AC J0E ULT-PRM UPG KIT	
Harness	Included		Included	
Tail / Brake Light	20-LED Included		Sequential 26-LED	
4-Way Flasher	Included		Included	
Rear LED Turn Signals	Included		Included	
Front Turn Signal	Basic COB LED Amber		Premium LED Amber with Accent Light	
Relay Harness	-		Included	
Driver Harness	-		Included	
Side Reflectors	Included		Included	

LIGHTING AND ELECTRICAL

THE NEXT GENERATION OF LIGHT KITS

The UMAX Premium Light Upgrade Kit and the UMAX Ultra-Premium Light Upgrade Kit will safely light your path and keep others informed about your travels. Both Premium and Ultra-Premium Light Upgrade Kits include Yamaha's exclusive new plug-and-play wiring harness that is fully expandable for further upgrades, such as turn signal indicators, side markers, and center high-mount stop/tail/turn lights.

- Plug-and-play installation
- Harness is weather-tight with sealed connectors
- Turn signal stalk incorporates the headlight off-low-high beam selector knob
- Adds high-beam functionality to factory LED headlights
- Turn signal handle integrated horn button
- Includes Yamaha's exclusive LED taillights (J0G-H4503-V0-00)
- All Yamaha Upgrade Light Kits include all necessary mounting hardware and detailed instructions with pictures
- Fits all UMAX Rally models



UMAX Premium Light Upgrade Kit

Features a plug-and-play upgradeable premium harness, all new phosphor coated chip-on-board (COB) module that features full-power flashing amber LED front turn signals, the all-new basic amber LED front turn signal chip-on-board (COB) module, LED taillight and brake lights, front and rear LED turn signals, 4-way flasher, horn, and side reflex reflectors. Includes Yamaha's exclusive, automotive-style, premium turn signal stalk that incorporates the headlight on/off switch, turn signal handle, and integrated horn button.

J0G-H43C0-T0-00 | \$499.99



UMAX Ultra-Premium Light Upgrade Kit

Features everything from the Premium Kit, in addition to the all-new waterproof/dustproof premium white LED accent/amber LED front turn signal chip-on-board (COB) module with clear lens assembly.

J0G-H34C0-S0-00 | \$629.99

PROTECTION



Drive² Fender Flare Kit



Add sporty styling for an aggressive, tough look and feel while providing an extra level of protection from mud and water. Fender flares are made from a durable, injection-molded polypropylene, UV-resistant material. Fits 2017- Drive² PTV and Drive² Sport 2+2 models.

GCA-J2G56-00-00 | \$109.99



Drive² Front Brush Guard



Give your Drive² protection on the front end while adding a rugged flair with this front brush guard that's designed to seamlessly integrate with the front profile all while creating a tough, aggressive look. Fits 2017- Drive² PTV and Drive² Sport 2+2 models.

GCA-J2G67-00-00 | \$139.99

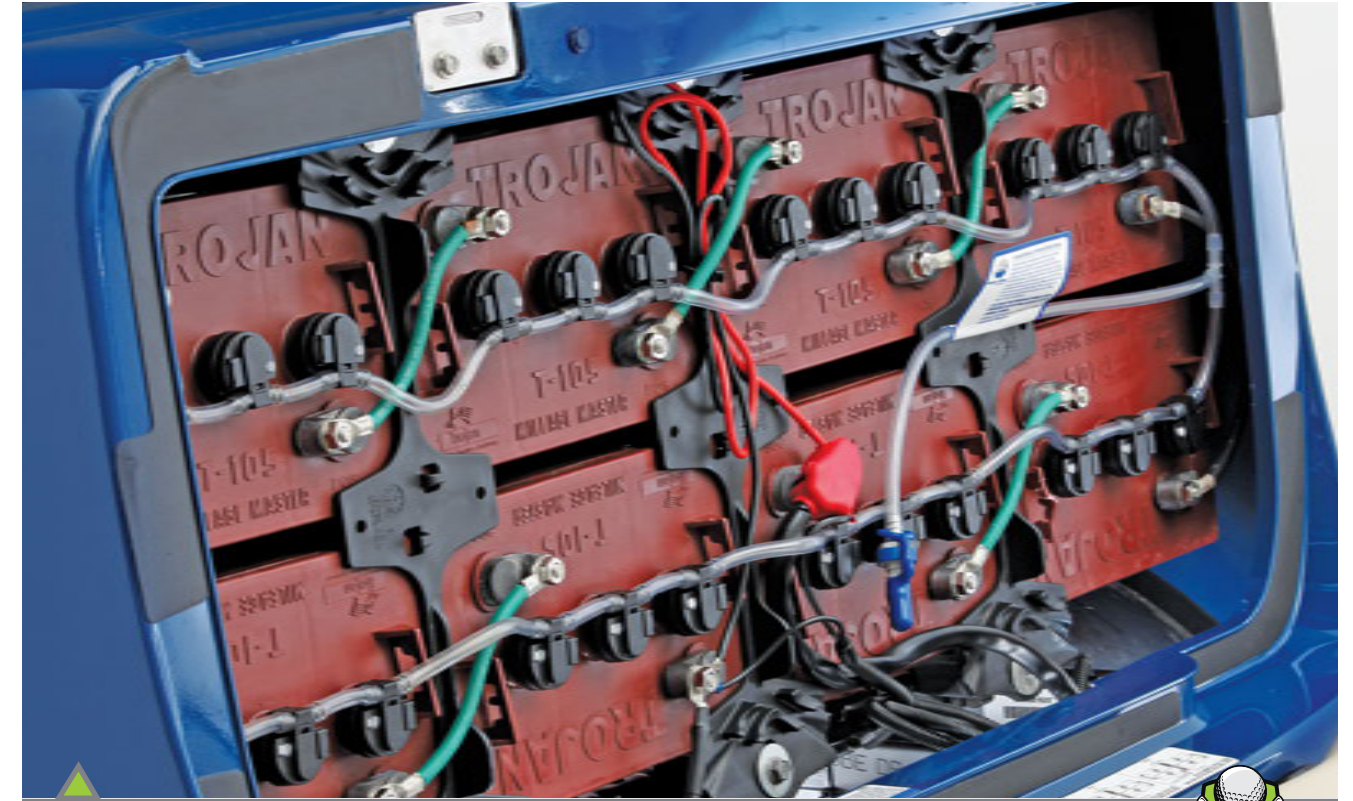


Puddle Blocker™ Parking Pad

Prevent stains from ruining your garage floor with our poly fiber parking pad that soaks up fluid spills and keeps them off your floor thanks to the poly film backing. Made in the U.S.A. Universal fit with a 5' x 8.5' mat.

GCA-JW299-30-00 | \$41.99

SERVICE



BFS™ Battery Watering System



Maximize the battery life of your Yamaha by using the BFS™ Battery Watering System that'll make routine maintenance a breeze. Low water levels in lead acid batteries are the primary cause of shortened battery life. Using a watering system saves time and money by filling the batteries simultaneously, providing a safer environment by reducing operators' exposure to battery acid, improving battery life and performance. Fits all 2019- UMAX Rally AC models, 2010-2014 The DRIVE PTV DC, 2015-2016 The DRIVE AC, 2017- Drive² PTV AC, and Drive² Sport 2+2 AC models. For your correct kit, verify your battery type (MFG/MDL).

SIX 8-VOLT TROJAN T875
GCA-JW286-30-00 | \$159.99

EIGHT 6-VOLT TROJAN T105
GCA-JW286-40-00 | \$159.99

NOTE: Requires Gravity Tank (GCA-JW286-00-23), sold separately.



BFS™ Gravity Tank

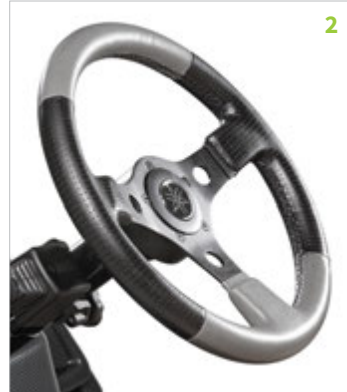
Use the BFS™ Gravity Tank to add water to your Battery Watering System (GCA-JW286-30-00)—sold separately—using the power of gravity versus manually pumping the water into the system. For use on BFS™ by Battery Watering System.

GCA-JW286-00-23 | \$63.99

STEERING WHEELS



1



2

Formula Steering Wheel Kits

Give your Drive² that custom racer edge with our Formula Steering Wheel Kits that have formula-one-inspired, styled wheels with complete step-by-step instructions for easy installation.

Fits 2010- The DRIVE PTV, 2019- UMAX Rally models, 2017- Drive² PTV and Drive² Sport 2+2 models.

1 FORMULA J SPORT WHEEL KIT

GCA-JW883-00-KT | \$149.99

2 FORMULA GT WHEEL KIT

GCA-JW883-10-KT | \$160.99

STEERING WHEEL INSTALLATION KIT ONLY

GCA-JW883-00-10 | \$39.99



Vinyl/Suede Combination Steering Wheel Kit

Step up your steering game with our premium suede wrapped/perforated vinyl wheel with contoured grip for the ultimate comfort and performance. Fits 2010- The DRIVE PTV, 2019- UMAX Rally models, 2017- Drive² PTV and Drive² Sport 2+2 models.

GCA-J0E83-00-LT | \$139.99



1



2



3

Suede Series Steering Wheel Kit

Experience the Suede Series. This Yamaha-exclusive series offers each driver a premium wheel that is suede-wrapped, hand-stitched with custom-color thread, and finished with a contoured grip for the ultimate comfort and performance. Fits 2010- The DRIVE PTV, 2019- UMAX Rally models, 2017- Drive² PTV and Drive² Sport 2+2 models.

1 Gray GCA-J0E83-00-GY | \$132.99

2 Black GCA-J0E83-00-BK | \$132.99

3 Black with Beige Top Marker GCA-J0E83-00-BG | \$132.99

TOPS



Drive² ClimaGuard™ Sun Top

Stay out of the sun and guarded from the elements with our injection-molded factory ClimaGuard™ Sun Top—the only sun top designed to completely match your Drive² in style and durability.

FITS ALL THE DRIVE/DRIVE² CARS

Black Sun Roof Cover JW1-K8314-21-00 | \$227.99
(includes sun top skin only)

Black Sun Top Assembly JW1-XK83A-20-00 | \$301.99
(includes sun top skin and handles)

FITS 2007 - 2016 THE DRIVE CARS

Black Sun Top Kit JW1-K84A0-20-00 | \$489.99
(includes sun top skin with handles, sun top supports, drain tubes, and hardware)

FITS 2017 - 2019 DRIVE² CARS

Black Sun Top Kit J0B-K84A0-10-00 | \$391.99
(includes sun top skin with handles, sun top supports, drain tubes, and hardware)

TRIMS AND ACCENTS



Vinyl Seat Cushion Assembly



Give your car a unique look and more luxurious feel by replacing your original seats with these stylish black seats made from high-quality Morbern® XLP™ vinyl.

FITS 2007- THE DRIVE PTV, 2019- DRIVE² PTV AND DRIVE² SPORT 2+2 MODELS

Seat Bottom GCA-JW984-00-00 | \$164.99

Seat Back GCA-JW987-00-00 | \$154.99

FITS 2019- DRIVE² PTV AND DRIVE² SPORT 2+2 MODELS

Seat Bottom GCA-J0B84-21-BK | \$162.99

Seat Back GCA-JW987-00-00 | \$154.99

Yamaha Carpet Set

Make your ride as comfortable as your family car with our rubber-backed floorboard carpet set that is extremely durable and features our embroidered Yamaha logo.

FITS 2017 - 2019 DRIVE² CARS

Beige GCA-J0A62-00-BG | \$145.99

Gray GCA-J0A62-00-GY | \$145.99

Black GCA-J0A62-00-BK | \$145.99

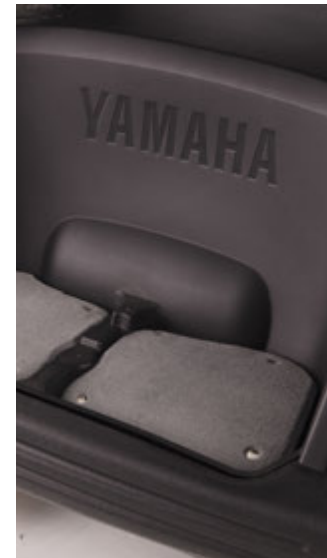
FITS 2010 - 2016 THE DRIVE CARS WITH DIVIDED BAGWELL

Beige GCA-JW162-30-BK | \$145.99

Black GCA-JW162-30-BK | \$145.99

FITS 2007 - 2010 THE DRIVE CARS WITH NON-DIVIDED BAGWELL

Beige GCA-JW162-00-BG | \$145.99



TRIMS AND ACCENTS



Drive² All-Weather Floor Mat

Experience ultimate comfort and style, at an affordable price, with this all-weather, rubber floor mat made from the highest quality synthetic rubber to ensure superior performance and absolute interior protection—unlike the competition. Fits 2017- Drive² PTV EFI and all 2017- Drive² Sport 2+2 models.

GCA-J0A72-00-00 | \$39.99



Premium Side Mirror Kit

Eliminate your side-rear blind spots with this easily adjustable, mounted side mirror. Made with durable ABS plastic, this convex mirror fits any golf car with 1" square sun roof supports.

GCA-JC181-00-00 | \$32.99

The DRIVE Flip Rear Facing Seat Kit



Whether you're traveling with friends and family or going solo with light cargo, The DRIVE Flip Rear Facing Seat Kit will allow you to easily convert extra seating into extra space and vice versa whenever you need to.

GCA-JP125-00-00 | \$1,060.99



Five-Panel Mirror Kit

Drive with confidence knowing you have full rear visibility with our five-panel mirror kit that allows you to see everything behind you. Fits 2017- Drive² PTV and Drive² Sport 2+2 models.

GCA-JW680-00-00 | \$44.99



TRIMS AND ACCENTS



Yamaha Kick Plate

Enhance your car's custom styling with our 38" T304 stainless steel, kick plate featuring an acid-etched Yamaha logo and hemmed edges for a superior finish. (Kit includes self-adhesive tape and plastic end caps and measures at 38"W x 2.67"H.) Fits 2019- Drive² PTV and 2019- Drive² Sport 2+2 models.

GCA-JW189-00-00 | \$94.99

WHEELS



10" 12-Spoke J-Series Alloy Wheel Assembly

Give your golf car a classic edge with this easy, 12-spoke J-Series Direct Replacement Alloy Wheel Assembly. Fits all 2015- The DRIVE PTV and 2017- Drive² PTV models.

1 Silver GCA-J0E51-00-SL | \$189.99
2 Black Machine GCA-J0E51-00-BM | \$189.99

3 All-Satin Black GCA-J0E51-00-SB | \$189.99
4 Gold Machine (NOT SHOWN) GCA-J0E51-00-GD | \$189.99



10" 12-Spoke J-Series All-Terrain Alloy Wheel Assembly

Make going off trail a breeze with this 12-Spoke J-Series All-Terrain Alloy Wheel Assembly that will give you better traction and a ready-to-rumble appearance. Fits 2013- Drive² Sport 2+2 and 2017- Drive² PTV models.

1 Silver GCA-J2G51-00-SL | \$215.99
2 Black Machine GCA-J2G51-00-BM | \$215.99

3 All-Satin Black GCA-J2G51-00-SB | \$215.99
4 Gold Machine (NOT SHOWN) GCA-J2G51-00-GD | \$215.99



WHEELS



12" 16-Spoke V-Series Radial Alloy Wheel Assembly

V-Series alloy wheel assembly features the Kenda Kruizer KR20A tire, the golf car industry's first true automotive steel-belted radial design tire specifically designed for Low Speed (LSV) and Personal Transportation Vehicles (PTV) that are approved to be used on golf courses and in golf course communities. Combined with the all-new V-Series alloy wheel by Wheel Mate Products for the ultimate driving experience. Fits 2017- Drive² PTV models.

1 Silver Machine.....	GCA-J0D52-2L-SL (Driver Side) GCA-J0D52-2R-SL (Passenger Side)	\$219.99
2 Gunmetal.....	GCA-J0D52-2L-GM (Driver Side) GCA-J0D52-2R-GM (Passenger Side)	\$229.99
3 Bronze.....	GCA-J0D52-2L-BZ (Driver Side) GCA-J0D52-2R-BZ (Passenger Side)	\$229.99
4 Black Machine.....	GCA-J0D52-2L-BM (Driver Side) GCA-J0D52-2R-BM (Passenger Side)	\$219.99 (NOT SHOWN)



10" 16-Spoke V-Series Wheel Assembly

Incorporate your bold style through your Drive² with our 10" 16-spoke wheel assembly—includes a chrome center cap with Yamaha emblem, chrome lug nuts, a chrome valve stem cap, and a chrome valve stem cover.

Fits 2015- DRIVE PTV and 2017- Drive² PTV models.

Silver.....	GCA-J0E51-20-SL \$189.99
Black.....	GCA-J0E51-20-BM \$189.99

10" 14-Spoke P-Series Alloy Wheel Assembly

If you're looking for a more comfortable ride, the 10" 14-Spoke Alloy Wheel will perfectly complement the exact style you're going for.

Fits 2015- DRIVE PTV and 2017- Drive² PTV models.

Silver.....	GCA-J0E51-10-SL \$189.99
-------------	----------------------------

10" Casino Alloy Wheel Assembly

Dress up your Drive² with our 10" Casino Alloy Wheel Assembly that daringly mixes stunning angles with detailed, black-accented finesse.

Fits 2015- DRIVE PTV and 2017- Drive² PTV models.

Black Machine.....	GCA-JC352-00-BK \$189.99
Silver (NOT SHOWN).....	GCA-JC352-00-SL \$189.99



WIND PROTECTION



Drive² Windshields

Completely redesigned and re-engineered to be the best in the industry. Made from polycarbonate for higher impact resistance, greater tensile, and more flexural strength and UV-resistance. The fold-down windshield has a flexible, industry-first mechanical hinge that has a chemically-bonded weld for superior strength. Press-in rubber latches for the top grip and bottom grip clips provide a more secure, yet quiet fit—and is effortless to store in the folded position. Fits 2017- Drive² PTV and Drive² Sport 2+2 models.

1 One-piece Clear.....	J0B-K7200-01-00 \$139.99
2 One-piece Tinted.....	J0B-K7200-11-00 \$154.99
3 Hinged Clear.....	J0B-K7200-21-00 \$165.99
4 Hinged Tinted.....	J0B-K7200-34-00 \$164.99



Drive² Three-sided Enclosure

This three-sided taupe enclosure perfectly complements the Club Pro Products® Cabana Golf Bag. Install in as little as five minutes with a patented extrusion system. The back panel allows access to the sweater basket. The cover disappears into a zippered sleeve when not in use. Fits all 2017- Drive² models.

Black.....	GCA-J0A63-00-BK \$379.99
Taupe.....	GCA-J0A63-00-00 \$379.99

NOTE: Will not work with Drive² polycarbonate windshield with mechanical hinge.



Drive² Four-sided Enclosures

Have a precisely engineered, custom-fitted sun top to keep cool and comfortable while cruising. With a mildew-/UV-/mold-resistant over-the-top, trackless design, installation is quick and easy so you can seamlessly move it from car to car without hassle. Fits all 2017- Drive² models.

Fabric - Taupe.....	GCA-J0A65-00-SD \$559.99
Vinyl - White.....	GCA-J0A65-00-00 \$519.99
Acrylic - Linen.....	GCA-J0A65-00-LN \$625.99



PERFECT PROTECTION

Yamalube Quality Care Products



For the Right Protection, the Pros Know Where to Go

Golf cars work hard all day long. You need protection that does too. Make sure your Yamaha is always up for 18 with high-quality Yamalube Quality Care Products.

Better For Your Yamaha

Protect your Yamaha from the wear and tear of nearly continuous use with Yamalube 10W-30 All-purpose Golf Car oil. It includes high-quality mineral base stocks and provides incredible film strength.

Better Lubrication

At Yamaha, we have stringent lubrication standards for all of our vehicles—and other off-the-shelf oils just aren't up to par. That's why we've created our own. Our factory-approved engine oils include unparalleled mineral base stocks and technologically superior additives, providing excellent protection.

Better Protection

Yamalube Performance All-purpose Golf Car oil is available in the precise multi-grade viscosity recommended for your four-stroke Yamaha golf car, and meets or exceeds all factory requirements.

QUALITY CARE AND MAINTENANCE PRODUCTS



1

GLARE® Blast™ Spray Polish

This spray polish features Camo-Adaptive Glassplexin® that makes gloss surfaces pop with brilliance and flat or matte surfaces look brand new without unwanted shine. It removes and prevents fingerprints while blocking harmful UV sun rays (UVA/UVB). Protects your vehicle's finish and reduces damage caused by road tar, road salt, salt air, eggs, bugs, bird droppings, tree sap, glue, ink, spray paint, acid rain, fall out, detergents, abrasions, and more. For use on gloss paint, flat paint, chrome, carbon fiber, plastic, glass, fiberglass, metals of all types, plastic, rubber, leather, vinyl, and Plexiglas®.

12 OZ. BOTTLE
ACC-YAMAB-LA-ST (QTY. 6*) | \$20.99



2

YamaClean® Vinyl Dressing

This one-step formula restores and protects vinyl, rubber, plastics, and leather. When dry, it leaves a transparent and water-repellent gloss coating that isn't slippery. Its UV protection also helps to prevent drying and cracking.

32 OZ. BOTTLE
ACC-YAMAC-VN-DR (QTY. 12*) | \$13.99



3

YamaClean® Pro-Wash Spray

YamaClean Pro-Wash Spray is a biodegradable vehicle spray wash that removes grime and soil. Rinses clean and helps keep your vehicle looking new. The most effective way to remove grime, grease, and bugs from most surfaces. For use on all Yamaha products: golf cars, ATVs, motorcycles, boats, WaveRunner® personal watercrafts, outboards, Side-by-Sides, snowmobiles, and generators.

32 OZ. BOTTLE
ACC-YAMAC-PW-SP (QTY. 12*) | \$9.95
1 GAL. BOTTLE
ACC-YAMAC-PW-GL (QTY. 4*) | \$29.95



4

YamaCoat™ Plastic Coating

A high-quality plastic coating that helps maintain the color and surface finish of plastic for that elusive factory-finish look. The unique comfort tip gives an even spray on components to be treated. Once applied, wipe off with a clean, dry cloth. Can also be left wet to help inhibit adhesion of mud and dirt for easy cleanup. Ideal for use on motocross and off-road motorcycles, ATVs, Side-by-Sides, and any other vehicles where plastic components are used.

10 OZ. CAN
ACC-YAMAC-OA-TC (QTY. 12*) | \$8.99



5

Spray Polish and Instant Detailer

This quick detailer will restore a lustrous shine to paint, chrome, glass, and smooth plastics like visors, windshields, and gauges. Gives textured plastics, rubber, and vinyl a beautiful satin finish. Anti-static properties repel dust and dirt to keep that shine.

14 OZ. CAN
ACC-SPRAY-PL-SH (QTY. 12*) | \$6.99



6

Yamashield™

Creates a non-conductive shield on surfaces that are exposed to the elements and provides extreme rust and corrosion protection, preserving metal components and electrical connections from moisture.

12 OZ. CAN
ACC-YAMASH-LD-00 (QTY. 12*) | \$9.49

QUALITY CARE AND MAINTENANCE PRODUCTS



Others simply follow industry standards.
WE PREFER TO SET THEM.

In 1967, after testing hundreds of lubrication combinations, Leo Lake developed a blend of oil that became the iconic Yamalube brand the world knows today.

To date, Yamalube remains the only oil built around the stringent demands, operating characteristics, and applications of not only Yamaha engines, but all powersport engines. With over 50 years of success, we still strive to make the best even better.

Yamaha now warrants the use of Yamalube in all of its golf car engines with the Yamalube Advantage™ engine lubrication limited warranty, covering 5,000 hours.



Yamalube® Drive² Tune-Up Kit

Peak performance in a kit is what you'll be giving your Drive² with the Yamalube Drive² Tune-Up Kit. Keep your Yamaha at its best, longer. Fits 2017-2019 Drive² EFI models.

CONTAINS:

- Yamalube 10W-30 Mineral Oil (1 Qts.)
- Genuine Yamaha Air Filter (QTY. 1)
- Genuine Yamaha Pre-Air Filter (QTY. 1)
- NGK® Spark Plug (QTY. 1)
- Drain Plug Gasket (QTY. 1)

LUB-GCDR2-MT-KT (QTY. 4*) | \$45.99



Yamalube® UMAX Tune-Up Kit

Think your UMAX wants the same oil as a minivan? Give it the care only the most rugged utility car on the market deserves: Yamalube (an oil kit specifically crafted to support the UMAX's performance, power, and versatility). Fits all 2019- UMAX EFI models.

CONTAINS:

- Yamalube 10W-30 Mineral Oil (37.2 oz.)
- Genuine Yamaha Air Filter (QTY. 1)
- Genuine Yamaha Pre-Air Filter (QTY. 1)
- NGK® Spark Plug (QTY. 1)
- Drain Plug Gasket (QTY. 1)

LUB-GCUMX-MT-KT (QTY. 4*) | \$51.99



Yamalube® Golf Car Tune-Up Kit

Do you think your golf car wants the same oil used in a minivan? Give it the care only the best golf car in the industry deserves: Yamalube.

CONTAINS:

- Yamalube 10W-30 Mineral Oil (1 Qts.)
- Genuine Yamaha Air Filter (QTY. 1)
- Genuine Yamaha Pre-Air Filter (QTY. 1)
- Genuine Yamaha Fuel Filter (QTY. 1) (LUB-GCCRB-MT-KT Only)
- NGK® Spark Plug (QTY. 1)
- Drain Plug Gasket (QTY. 1)

FITS CARBURETED MODELS

LUB-GCCRB-MT-KT (QTY. 4*) | \$49.99

FITS EFI MODELS

LUB-GCEFI-MT-KT (QTY. 4*) | \$45.99

QUALITY CARE AND MAINTENANCE PRODUCTS

Yamalube® for Golf Car

Give your golf car the only oil that is specifically formulated to enhance the performance of your Yamaha. Fits all Yamaha golf car models.

1-QT. BOTTLE
LUB-10W30-GG-12 (QTY. 12*) | \$3.99



Fuel Med RX

Prevent fuel system corrosion, improve performance, and extend the life of your Yamaha by using Fuel Med RX. Routine use will fight back phase separation, moisture damage, dissolve gum, and varnish in your carburetion system—all while extending spark plug life. Universal fit.

3.2 OZ. BOTTLE (BLENDED)
ACC-FUELM-RX-04 (QTY. 48*) | \$1.95

16 OZ. BOTTLE (CONCENTRATED; CHAMBERED BOTTLE FOR EASY MEASURING)
ACC-FUELM-RX-16 (QTY. 12*) | \$5.99

NOTE: Use continuous treat rate if in-season fuel will sit in a tank for more than seven days. The storage treat rate keeps fuel fresh for up to one year.



Engine Med RX

Empower your golf car with superior carbon deposit control, cleaning injectors, carburetors, intake valves and ports, and combustion chambers. Also protects fuel system metals from ethanol sulfate salt corrosion. Add it at every fill up to avoid unnecessary engine repairs due to poor quality gas and to keep your engine clean and running efficiently. Universal fit.

3.2 OZ. BOTTLE (BLENDED)
ACC-ENGIN-RX-04 (QTY. 48*) | \$2.49

16 OZ. BOTTLE (CONCENTRATED; CHAMBERED BOTTLE FOR EASY MEASURING)
ACC-ENGIN-RX-16 (QTY. 12*) | \$23.99

SPECIFICATIONS

PTV QUIETECH EFI

OVERALL LENGTH	93.6 in (238cm)
OVERALL WIDTH	47.3 in (120cm)
OVERALL HEIGHT (WITHOUT SUN TOP)	8.4 in (123cm)
WHEELBASE	64.4 in (164cm)
FRONT WHEEL TREAD	35 in (89cm)
REAR WHEEL TREAD	38.7 in (98cm)
MINIMUM GROUND CLEARANCE	5.5 in (14cm)
DRY WEIGHT	751 lb (341kg)

FUEL TANK CAPACITY	5.8 U.S. gal (22 liters)
TIRE SIZE	205/65-10 DOT (4-ply rating)
SEATING CAPACITY	Two persons
AVAILABLE MODEL COLORS	Glacier Metallic: Atomic Flame, Mica, Graphite, Bluestone, Moonstone, Onyx, Aqua Blue, Jasper
AVAILABLE SEAT COLORS	Standard: Stone <p>Optional: Black</p>
AVAILABLE SUNTOP COLORS	Standard: Stone <p>Optional: Black</p>
WARRANTY	Standard 4-year limited vehicle warranty

ENGINE TYPE	Yamaha-built 357cc, low-emission single cylinder 60° incline OHV
LUBRICATION SYSTEM	Splash-style positive oil lubrication
OIL CAPACITY	1 U.S. quart (1 liter, 1000 cc)
AIR CLEANER	Two-stage, urethane-foam pre-cleaner, and high-capacity pleated paper cartridge
COOLING SYSTEM	Forced air
FUEL SYSTEM	Electronic fuel injection
STARTING SYSTEM	Starter generator with pedal start system

FRAME	HybriCore™ Chassis features a robotic welded automotive ladder-style steel frame protected with a multi-step full-immersion phosphate treatment, electro-deposition epoxy-based coating, and an electrostatic applied polyester/urethane powder topcoat
BODY	Mold-in Polypropylene for Glacier color. Custom-formulated thermoplastic olefin painted with a two-part top coat of high-luster automotive-grade polyurethane
STEERING	Self-compensating double reduction helical rack-and-pinion
FRONT SUSPENSION	Tru-Trak II™ fully independent automotive-style strut suspension
REAR SUSPENSION	Fully independent automotive-style strut suspension
BRAKES	Self-adjusting mechanical, rear wheel drum brakes
BUMPERS	Front and rear 5 mph energy-absorbing bumpers

STEERING	Self-compensating double reduction helical rack-and-pinion
FRONT SUSPENSION	Tru-Trak II™ fully independent automotive-style strut suspension
REAR SUSPENSION	Fully independent automotive-style strut suspension
BRAKES	Self-adjusting mechanical, rear wheel drum brakes
BUMPERS	Front and rear 5 mph energy-absorbing bumpers

MAX SPEED ADJUSTABLE	19 mph (31 kph)
MINIMUM TURNING RADIUS	9.5 ft (2.9m)

PTV POWERTECH AC

OVERALL LENGTH	93.6 in (238cm)
OVERALL WIDTH	47.3 in (120cm)
OVERALL HEIGHT (WITHOUT SUN TOP)	48.4 in (123cm)
WHEELBASE	64.4 in (164cm)
FRONT WHEEL TREAD	35 in (89cm)
REAR WHEEL TREAD	38.11 in (97cm)
MINIMUM GROUND CLEARANCE	5.5 in (14cm)
DRY WEIGHT	665 lb (302 kg)

TIRE SIZE	205/65-10 DOT (4-ply rating)
SEATING CAPACITY	Two persons
AVAILABLE MODEL COLORS	Glacier Metallic: Atomic Flame, Mica, Graphite, Bluestone, Carbon, Moonstone, Onyx, Aqua Blue, Jasper
AVAILABLE SEAT COLORS	Standard: Stone <p>Optional: Black</p>
AVAILABLE SUNTOP COLORS	Standard: Stone <p>Optional: Black</p>
WARRANTY	Standard 4-year limited vehicle warranty

MOTOR	48-volt AC
OUTPUT RATING	6.7 hp (5.0 kW) for 60 minutes
MOTOR CONTROL UNIT	NEOS 350 amp AC controller by Toyota Industries Corporation
BATTERIES	Standard: Six 8-volt Trojan T-875 Batteries <p>Optional: Eight 6-volt Trojan T-105 Batteries</p>
CHARGER	Delta-Q

FRAME	HybriCore™ Chassis features a robotic welded automotive ladder-style steel frame protected with a multi-step full-immersion phosphate treatment, electro-deposition epoxy-based coating, and an electrostatic applied polyester/urethane powder topcoat
BODY	Mold-in Polypropylene for Glacier color. Custom-formulated thermoplastic olefin painted with a two-part top coat of high-luster automotive-grade polyurethane
STEERING	Self-compensating double reduction helical rack-and-pinion
FRONT SUSPENSION	Tru-Trak II™ fully independent automotive-style strut suspension
REAR SUSPENSION	Unit swing arm with coil springs over hydraulic shock absorbers
BRAKES	Self-adjusting mechanical, rear wheel drum brakes
BUMPERS	Front and rear 5 mph energy-absorbing bumpers

STEERING	Self-compensating double reduction helical rack-and-pinion
FRONT SUSPENSION	Tru-Trak II™ fully independent automotive-style strut suspension
REAR SUSPENSION	Unit swing arm with coil springs over hydraulic shock absorbers
BRAKES	Self-adjusting mechanical, rear wheel drum brakes
BUMPERS	Front and rear 5 mph energy-absorbing bumpers

MAX SPEED ADJUSTABLE	19.3 mph (31 kph)
MINIMUM TURNING RADIUS	10.4 ft (3.2m)

MAX SPEED ADJUSTABLE	14.9 mph (24 kph)
MINIMUM TURNING RADIUS	9 ft (3m)

Specifications subject to change without notice.

ADVENTURER SPORT 2+2 EFI

OVERALL LENGTH	108.3 in (275cm)
OVERALL WIDTH	50.8 in (129cm)
OVERALL HEIGHT (WITHOUT SUN TOP)	50 in (127cm)
WHEELBASE	64.4 in (164cm)
FRONT WHEEL TREAD	37.8 in (96cm)
REAR WHEEL TREAD	39.8 in (101cm)
MINIMUM GROUND CLEARANCE	5.9 in (15cm)
DRY WEIGHT	934 lb (424kg)

FUEL TANK CAPACITY	5.8 U.S. gal (22 liters)
TIRE SIZE	20x10-8 (4-ply rating)
SEATING CAPACITY	Two persons
AVAILABLE MODEL COLORS	Glacier Metallic: Atomic Flame, Mica, Graphite, Bluestone, Moonstone, Onyx, Aqua Blue, Jasper
AVAILABLE SEAT COLORS	Standard: Stone <p>Optional: Black</p>
AVAILABLE SUNTOP COLORS	Standard: Stone <p>Optional: Black</p>
WARRANTY	Standard 4-year limited vehicle warranty

ENGINE TYPE	Yamaha-built 357cc, low-emission single cylinder 60° incline OHV
LUBRICATION SYSTEM	Splash-style positive oil lubrication
OIL CAPACITY	1 U.S. quart (1 liter, 1000 cc)
AIR CLEANER	Two-stage, urethane-foam pre-cleaner, and high-capacity pleated paper cartridge
COOLING SYSTEM	Forced air
FUEL SYSTEM	Electronic fuel injection
STARTING SYSTEM	Starter generator with pedal start system

FRAME	HybriCore™ Chassis features a robotic welded automotive ladder-style steel frame protected with a multi-step full-immersion phosphate treatment, electro-deposition epoxy-based coating, and an electrostatic applied polyester/urethane powder topcoat
BODY	Mold-in Polypropylene for Glacier color. Custom-formulated thermoplastic olefin painted with a two-part top coat of high-luster automotive-grade polyurethane
STEERING	Self-compensating double reduction helical rack-and-pinion
FRONT SUSPENSION	Tru-Trak II™ fully independent automotive-style strut suspension
REAR SUSPENSION	Fully independent automotive-style strut suspension
BRAKES	Self-adjusting mechanical, rear wheel drum brakes
BUMPERS	Front and rear 5 mph energy-absorbing bumpers

STEERING	Self-compensating double reduction helical rack-and-pinion
FRONT SUSPENSION	Tru-Trak II™ fully independent automotive-style strut suspension
REAR SUSPENSION	Fully independent automotive-style strut suspension
BRAKES	Self-adjusting mechanical, rear wheel drum brakes
BUMPERS	Front and rear 5 mph energy-absorbing bumpers

STEERING	Self-compensating double reduction helical rack-and-pinion
FRONT SUSPENSION	Tru-Trak II™ fully independent automotive-style strut suspension
REAR SUSPENSION	Fully independent automotive-style strut suspension
BRAKES	Self-adjusting mechanical, rear wheel drum brakes
BUMPERS	Front and rear 5 mph energy-absorbing bumpers

MAX SPEED ADJUSTABLE	14.9 mph (24 kph)
MINIMUM TURNING RADIUS	9 ft (3m)

ADVENTURER SPORT 2+2 AC

OVERALL LENGTH	108.3 in (275cm)
OVERALL WIDTH	50.8 in (129cm)
OVERALL HEIGHT (WITHOUT SUN TOP)	50 in (127cm)
WHEELBASE	64.4 in (164cm)
FRONT WHEEL TREAD	37.8 in (96cm)
REAR WHEEL TREAD	39.8 in (101cm)
MINIMUM GROUND CLEARANCE	5.9 in (15cm)
DRY WEIGHT	778 lb (353kg)

TIRE SIZE	20x10-8 (4-ply rating)
SEATING CAPACITY	Two persons
AVAILABLE MODEL COLORS	Glacier Metallic: Atomic Flame, Mica, Graphite, Bluestone, Moonstone, Onyx, Aqua Blue, Jasper
AVAILABLE SEAT COLORS	Standard: Stone <p>Optional: Black</p>
AVAILABLE SUNTOP COLORS	Standard: Stone <p>Optional: Black</p>
WARRANTY	Standard 4-year limited vehicle warranty

MOTOR	48-volt AC
OUTPUT RATING	6.7 hp (5.0 kW) for 60 minutes
MOTOR CONTROL UNIT	NEOS 350 amp AC controller by Toyota Industries Corporation
BATTERIES	Standard: Six 8-volt Trojan T-875 Batteries . <p>Optional: Eight 6-volt Trojan T-105 Batteries</p>
CHARGER	Delta-Q

FRAME	HybriCore™ Chassis features a robotic welded automotive ladder-style steel frame protected with a multi-step full-immersion phosphate treatment, electro-deposition epoxy-based coating, and an electrostatic applied polyester/urethane powder topcoat
BODY	Mold-in Polypropylene for Glacier color. Custom-formulated thermoplastic olefin painted with a two-part top coat of high-luster automotive-grade polyurethane
STEERING	Self-compensating double reduction helical rack-and-pinion
FRONT SUSPENSION	Tru-Trak II™ fully independent automotive-style strut suspension
REAR SUSPENSION	Unit swing arm with DUAL RATE coil springs overhydraulic shock absorbers
BRAKES	Self-adjusting mechanical, rear wheel drum brakes
BUMPERS	Front and rear 5 mph energy-absorbing bumpers

STEERING	Self-compensating double reduction helical rack-and-pinion
FRONT SUSPENSION	Tru-Trak II™ fully independent automotive-style strut suspension
REAR SUSPENSION	Unit swing arm with DUAL RATE coil springs overhydraulic shock absorbers
BRAKES	Self-adjusting mechanical, rear wheel drum brakes
BUMPERS	Front and rear 5 mph energy-absorbing bumpers

STEERING	Self-compensating double reduction helical rack-and-pinion
FRONT SUSPENSION	Tru-Trak II™ fully independent automotive-style strut suspension
REAR SUSPENSION	Unit swing arm with DUAL RATE coil springs overhydraulic shock absorbers
BRAKES	Self-adjusting mechanical, rear wheel drum brakes
BUMPERS	Front and rear 5 mph energy-absorbing bumpers

MAX SPEED ADJUSTABLE	14.9 mph (24 kph)
MINIMUM TURNING RADIUS	9 ft (3m)

UMAX RALLY ONE EFI

OVERALL LENGTH	111.45	(283.1cm)
OVERALL HEIGHT (NO SUN TOP)	48.54 in (123.3cm)	
OVERALL HEIGHT (W/ SUN TOP)	74.02 in (188 cm)	
OVERALL WIDTH	49.33 in (125.3cm)	
WHEELBASE	66.18 in (168.1cm)	
FRONT WHEEL TREAD	39.96 in (101.5cm)	
REAR WHEEL TREAD	40.19 in (102.1cm)	
MINIMUM GROUND CLEARANCE	4.56 in (11.6cm)	
DRY WEIGHT (WITH SUN TOP)	421.8kg	

FUEL TANK CAPACITY	5.2 US GAL (20 LITERS)
TIRE SIZE	23x10.5-12 4-ply Monitor K389 (front) K500 (rear)
SEATING CAPACITY	Two persons
AVAILABLE MODEL COLORS	Glacier Metallic: Jasper, Carbon, Aqua Blue, Noble Orange, Evergreen
AVAILABLE SEAT COLORS	Black
AVAILABLE SUNTOP COLORS	Black
WARRANTY	Standard 2-year limited vehicle warranty

ENGINE TYPE	Yamaha built 402cc, Low Emission Single Cylinder 60deg Incline OHV
LUBRICATION SYSTEM	Splash-style positive oil lubrication
OIL CAPACITY	1.16 U.S. quart (1.1 liter, 1100cc), Yamalube 10W-30
AIR CLEANER	Two-stage, urethane-foam pre-cleaner, and high-capacity pleated paper cartridge
COOLING SYSTEM	Forced air
FUEL SYSTEM	Electronic fuel injection
STARTING SYSTEM	Starter generator with pedal start system
HORSEPOWER	3600 rpm (14.25 hp)

FRAME	HybriCore™ Chassis features a robotic welded automotive ladder-style steel frame protected with a multi-step full-immersion phosphate treatment, electro-deposition epoxy-based coating, and an electrostatic applied polyester/urethane powder topcoat
BODY	Custom-formulated thermoplastic olefin painted with a two-part top coat of high-luster automotive-grade polyurethane
STEERING	Self-compensating double reduction helical rack-and-pinion
FRONT SUSPENSION	Tru-Trak II™ fully independent automotive-style strut suspension
REAR SUSPENSION	Unit swing arm with DUAL RATE coil springs over hydraulic shock absorbers
BRAKES	Self-adjusting mechanical, rear wheel drum brakes
CARGO BED MAX LOAD	300 lb
ROLLING TRAILER MAX WEIGHT	800 lb
MAX TONGUE WEIGHT	100 lb

STEERING	Self-compensating double reduction helical rack-and-pinion
FRONT SUSPENSION	Tru-Trak II™ fully independent automotive-style strut suspension
REAR SUSPENSION	Unit swing arm with DUAL RATE coil springs over hydraulic shock absorbers
BRAKES	Self-adjusting mechanical, rear wheel drum brakes
CARGO BED MAX LOAD	300 lb
ROLLING TRAILER MAX WEIGHT	800 lb
MAX TONGUE WEIGHT	100 lb
VEHICLE RATED CAPACITY	800 lb
CARGO BED DIMENSIONS	33.2" L x 45.9" W x 11.9" H

MAX FORWARD SPEED	19.5 mph (31.4 km/h)
MAX REVERSE SPEED	17.5 mph (28 km/h)
MINIMUM TURNING RADIUS	3.48m
G.V.W.	1,708 lb

UMAX RALLY TWO EFI

OVERALL LENGTH	119.37 in (303.2cm)
OVERALL HEIGHT (NO SUN TOP)	48.54 in (123.3cm)
OVERALL HEIGHT (WITH SUN TOP)	74.02 in (188 cm)
OVERALL WIDTH	49.33 in (125.3cm)
WHEELBASE	77.2 in (196.1cm)
FRONT WHEEL TREAD	40.27 in (102.3cm)
REAR WHEEL TREAD	40.19 in (102.1cm)
MINIMUM GROUND CLEARANCE	4.52 in (11.5cm)
DRY WEIGHT (WITH SUN TOP)	455.4kg

FUEL TANK CAPACITY	5.2 US GAL (20 LITERS)
TIRE SIZE	23x10.5-12 4-ply Monitor K389 (front) K500 (rear)
SEATING CAPACITY	Two persons
AVAILABLE MODEL COLORS	Glacier Metallic: Jasper, Carbon, Aqua Blue, Noble Orange, Evergreen
AVAILABLE SEAT COLORS	Black
AVAILABLE SUNTOP COLORS	Black
WARRANTY	Standard 2-year limited vehicle warranty

ENGINE TYPE	Yamaha built 402cc, Low Emission Single Cylinder 60° Incline OHV
LUBRICATION SYSTEM	Splash-style positive oil lubrication
OIL CAPACITY	1.16 U.S. quart (1.1 liter, 1100cc), Yamalube® 10W-30
AIR CLEANER	Two-stage, urethane-foam pre-cleaner, and high-capacity pleated paper cartridge
COOLING SYSTEM	Forced air
FUEL SYSTEM	Electronic fuel injection
STARTING SYSTEM	Starter generator with pedal start system
HORSEPOWER	3600 rpm (14.25 hp)

FRAME	HybriCore™ Chassis features a robotic welded automotive ladder-style steel frame protected with a multi-step full-immersion phosphate treatment, electro-deposition epoxy-based coating, and an electrostatic applied polyester/urethane powder topcoat
BODY	Custom-formulated thermoplastic olefin painted with a two-part top coat of high-luster automotive-grade polyurethane
STEERING	Self-compensating double reduction helical rack-and-pinion
FRONT SUSPENSION	Tru-Trak II™ fully independent automotive-style strut suspension
REAR SUSPENSION	Unit swing arm with DUAL RATE coil springs over hydraulic shock absorbers
BRAKES	Self-adjusting mechanical, front and rear wheel drum brakes
CARGO BED MAX LOAD	800 lb
ROLLING TRAILER MAX WEIGHT	1,200 lb
MAX TONGUE WEIGHT	150 lb
VEHICLE RATED CAPACITY	1,500 lb
CARGO BED DIMENSIONS	41.1" L x 45.9" W x 11.9" H

MAX FORWARD SPEED	19.5 mph (31.4 km/h)
MAX REVERSE SPEED	17.5 mph (28 km/h)
MINIMUM TURNING RADIUS	3.98m
G.V.W.	2,533 lb

UMAX RALLY TWO AC

OVERALL LENGTH	119.37 in (303.2 cm)
OVERALL HEIGHT (NO SUN TOP)	48.54 in (123.3cm)
OVERALL HEIGHT (WITH SUN TOP)	74.02 in (188 cm)
OVERALL WIDTH	49.33 in (125.3cm)
WHEELBASE	77.2 in (196.1cm)
FRONT WHEEL TREAD	40.27 in (102.3cm)
REAR WHEEL TREAD	40.19 in (102.1cm)
MINIMUM GROUND CLEARANCE	4.52 in (11.5cm)
DRY WEIGHT (WITH SUN TOP)	639.6 kg (with Trojan T-105 batteries)

TIRE SIZE	23x10.5-12 4-ply Monitor K389 (front) K500 (rear)
SEATING CAPACITY	Two persons
AVAILABLE MODEL COLORS	Glacier Metallic: Jasper, Carbon, Aqua Blue, Noble Orange, Evergreen
AVAILABLE SEAT COLORS	Black
AVAILABLE SUNTOP COLORS	Black
WARRANTY	Standard 2-year limited vehicle warranty

MOTOR	48-volt AC
OUTPUT RATING	6.7 hp (5.0 kW FOR 60 minutes)
MOTOR CONTROL UNIT	NEOS 350 amp AC controller by Toyota Industries Corporation
BATTERIES	Standard: Eight 6-volt Trojan T-105 Batteries

FRAME	HybriCore™ Chassis features a robotic welded automotive ladder-style steel frame protected with a multi-step full-immersion phosphate treatment, electro-deposition epoxy-based coating, and an electrostatic applied polyester/urethane powder topcoat
BODY	Custom-formulated thermoplastic olefin painted with a two-part top coat of high-luster automotive-grade polyurethane
STEERING	Self-compensating double reduction helical rack-and-pinion
FRONT SUSPENSION	Tru-Trak II™ fully independent automotive-style strut suspension
REAR SUSPENSION	Unit swing arm with DUAL RATE coil springs over hydraulic shock absorbers
BRAKES	Self-adjusting mechanical, front and rear wheel drum brakes
CARGO BED MAX LOAD	800 lb
ROLLING TRAILER MAX WEIGHT	1,200 lb
MAX TONGUE WEIGHT	150 lb
VEHICLE RATED CAPACITY	1,500 lb
CARGO BED DIMENSIONS	41.1" L x 45.9" W x 11.9" H

MAX FORWARD SPEED	19.5 mph (31.4 km/h)
MAX REVERSE SPEED	6.2 mph (10 km/h)
MINIMUM TURNING RADIUS	3.98m
G.V.W.	2,910 lb

UMAX RALLY 2+2 EFI

OVERALL LENGTH	134.37 in (341.3cm)
OVERALL HEIGHT (NO SUN TOP)	57.48 in (146cm)
OVERALL HEIGHT (WITH SUN TOP)	77.20 in (196.1cm)
OVERALL WIDTH	53.54 in (136cm)
WHEELBASE	77.28 in (196.3cm)
FRONT WHEEL TREAD	41.26 in (104.8cm)
REAR WHEEL TREAD	41.26 in (104.8cm)
MINIMUM GROUND CLEARANCE	5.94 in (15.1cm)
DRY WEIGHT (WITH SUN TOP)	550 kg

FUEL TANK CAPACITY	5.2 US GAL (20 LITERS)
TIRE SIZE	23x10.5-12 4-ply Monitor K389 (front) K500 (rear)
SEATING CAPACITY	Four persons
AVAILABLE MODEL COLORS	Glacier Metallic: Jasper, Carbon, Aqua Blue, Noble Orange, Evergreen
AVAILABLE SEAT COLORS	Black
AVAILABLE SUNTOP COLORS	Black
WARRANTY	Standard 2-year limited vehicle warranty

ENGINE TYPE	Yamaha built 402cc, Low Emission Single Cylinder 60° Incline OHV
LUBRICATION SYSTEM	Splash-style positive oil lubrication
OIL CAPACITY	1.16 U.S. quart (1.1 liter, 1100cc), Yamalube® 10W-30
AIR CLEANER	Two-stage, urethane-foam pre-cleaner, and high-capacity pleated paper cartridge
COOLING SYSTEM	Forced air
FUEL SYSTEM	Electronic fuel injection
STARTING SYSTEM	Starter generator with pedal start system
HORSEPOWER	3600 rpm (12.67 hp)

FRAME	HybriCore™ Chassis features a robotic welded automotive ladder-style steel frame protected with a multi-step full-immersion phosphate treatment, electro-deposition epoxy-based coating, and an electrostatic applied polyester/urethane powder topcoat
BODY	Custom-formulated thermoplastic olefin painted with a two-part top coat of high-luster automotive-grade polyurethane
STEERING	Self-compensating double reduction helical rack-and-pinion
FRONT SUSPENSION	Tru-Trak II™ fully independent automotive-style strut suspension
REAR SUSPENSION	Unit swing arm with DUAL RATE coil springs over hydraulic shock absorbers
BRAKES	Mechanical, 4-wheel drum
FLIP-SEAT CARGO MAX LOAD	250 lb
MAXIMUM COMBINED LOAD WITH TWO PASSENGERS AND CARGO	400 lb
VEHICLE RATED CAPACITY	1,000 lb

MAX FORWARD SPEED	15 mph (24.1 km/h)
MAX REVERSE SPEED	15 mph (24.1 km/h)
MINIMUM TURNING RADIUS	3.98m
G.V.W.	2,717 lb

UMAX RALLY 2+2 AC

OVERALL LENGTH	134.37 in (341.3 cm)
OVERALL HEIGHT (NO SUN TOP)	57.48 in (146cm)
OVERALL HEIGHT (WITH SUN TOP)	77.20 in (196.1cm)
OVERALL WIDTH	53.54 in (136cm)
WHEELBASE	77.28 in (196.3cm)
FRONT WHEEL TREAD	41.26 in (104.8cm)
REAR WHEEL TREAD	41.26 in (104.8cm)
MINIMUM GROUND CLEARANCE	5.98 in (15.2cm)
DRY WEIGHT (WITH SUN TOP)	599 kg (with Trojan T-105 batteries)

TIRE SIZE	23x10.5-12 4-ply Monitor K389 (front) K500 (rear)
SEATING CAPACITY	Four persons
AVAILABLE MODEL COLORS	Glacier Metallic: Jasper, Carbon, Aqua Blue, Noble Orange, Evergreen
AVAILABLE SEAT COLORS	Black
AVAILABLE SUNTOP COLORS	Black
WARRANTY	Standard 2-year limited vehicle warranty

MOTOR	48-volt AC
OUTPUT RATING	6.7 hp (5.0 kW FOR 60 minutes)
MOTOR CONTROL UNIT	NEOS 350 amp AC controller by Toyota Industries Corporation
BATTERIES	Standard: Eight 6-volt Trojan T-105 Batteries

FRAME	HybriCore™ Chassis features a robotic welded automotive ladder-style steel frame protected with a multi-step full-immersion phosphate treatment, electro-deposition epoxy-based coating, and an electrostatic applied polyester/urethane powder topcoat
BODY	Custom-formulated thermoplastic olefin painted with a two-part top coat of high-luster automotive-grade polyurethane
STEERING	Self-compensating double reduction helical rack-and-pinion
FRONT SUSPENSION	Tru-Trak II™ fully independent automotive-style strut suspension
REAR SUSPENSION	Unit swing arm with DUAL RATE coil springs over hydraulic shock absorbers
BRAKES	Mechanical, 4-wheel drum
FLIP-SEAT CARGO MAX LOAD	250 lb
ROLLING TRAILER MAX WEIGHT	1,200 lb
MAXIMUM COMBINED LOAD WITH TWO PASSENGERS AND CARGO	400 lb
VEHICLE RATED CAPACITY	1,000 lb
CARGO BED DIMENSIONS	41.1" L x 45.9" W x 11.9" H

MAX FORWARD SPEED	15 mph (24.1 km/h)
MAX REVERSE SPEED	6.2 mph (10 km/h)
MINIMUM TURNING RADIUS	3.98m
G.V.W.	2,345 lb



THE EASY CHOICE™



This document contains many of the valuable trademarks and service marks owned and used by Yamaha throughout the world. The document may also contain references to other company, brand, and product names that may be the trademarks/service marks of their respective owners. Unless noted otherwise, these company, brand, and product names are used herein for identification purposes only, and reference to any names, marks, products, or services of third parties do not constitute or imply endorsement, sponsorship, or recommendation of the third party or the product or services.

1270 Chastain Road NW, Kennesaw, Georgia 30144
 1.866.747.4027 | YamahaGolfCar.com
 Shop accessories at ShopYamaha.com

